

355 W 15th Avenue
Vancouver, BC

TOTAL FINISHED AREA: 1549 SQ.FT.

OTHER AREA(S)

| | |
|-----------|-------------|
| GARAGE: | 231 SQ.FT. |
| DECK(S): | 186 SQ.FT.* |
| PATIO(S): | 252 SQ.FT.* |
| PORCH | 54 SQ.FT.* |

** EXCLUDES 41 SQ.FT. OF LOW CEILING HEIGHT AREA



BRIAN, ROSALEE, SHANNON & JAMIE

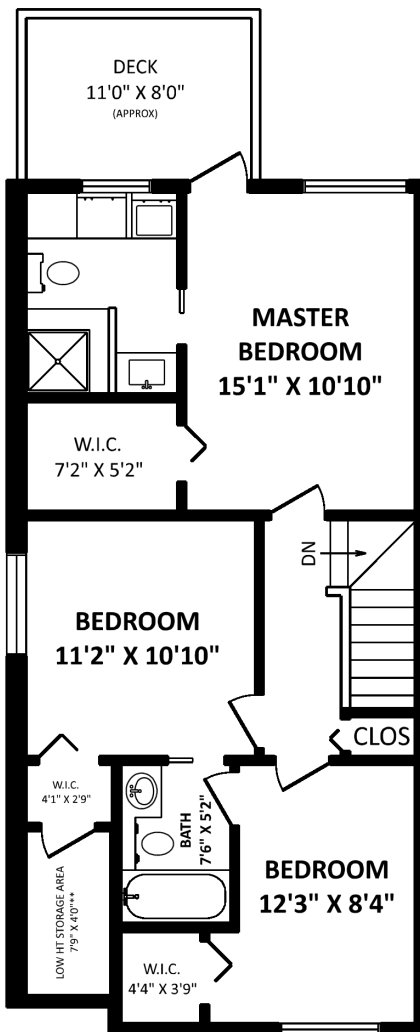
RE/MAX Select Properties

Cell: 604-785-4324

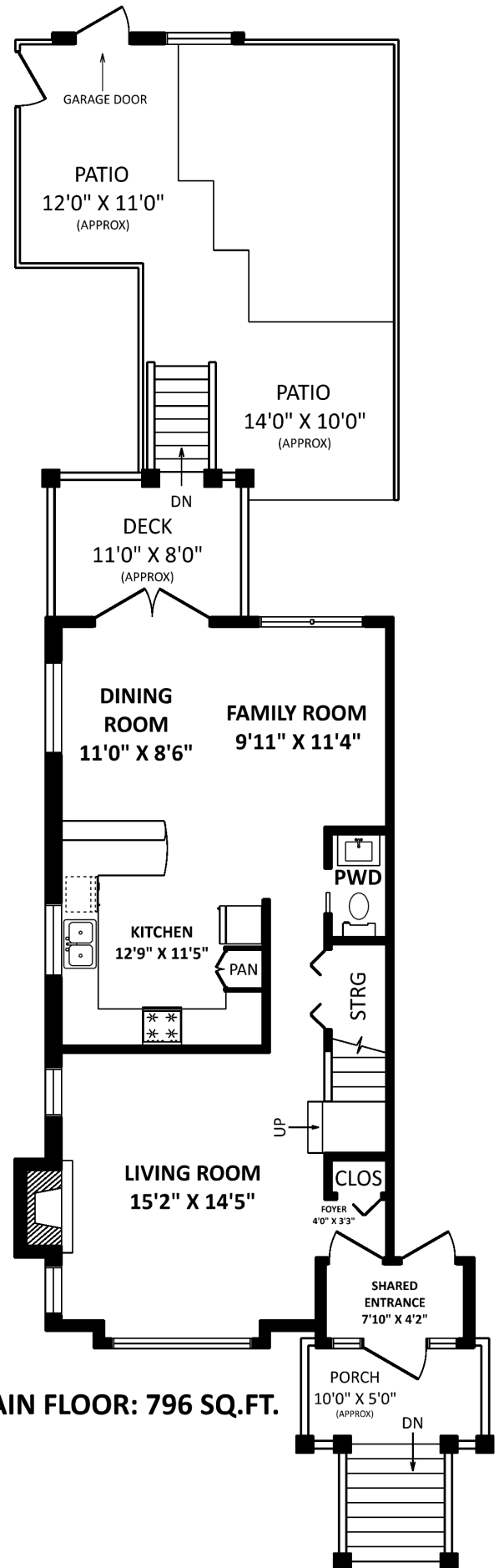
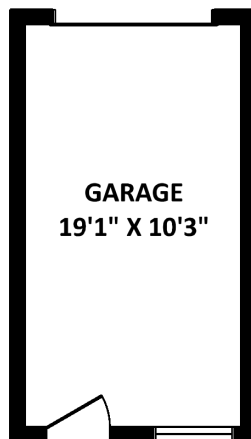
Office: 604-737-8865

info@yourhomevancouver.ca

www.yourhomevancouver.ca



UPPER FLOOR: 753 SQ.FT.**



MAIN FLOOR: 796 SQ.FT.

[APRIL 29, 2021]



TEL: 604-575-1244
www.seevirtual360.com

DISCLAIMERS:
1. MEASUREMENTS ARE FOR PROMOTIONAL USE ONLY & ARE NOT INTENDED FOR CONSTRUCTION USE. ROOM DIMENSIONS ARE APPROXIMATE.
2. FINISHED AREAS ARE ENCLOSED AREAS IN A HOUSE THAT ARE SUITABLE FOR YEAR-ROUND USE, EMBODYING WALLS, FLOORS, AND CEILINGS THAT ARE SIMILAR TO THE REST OF THE HOUSE. (ANSI Z765-2013)
3. FOR ATTACHED SINGLE-FAMILY HOUSES, THE FINISHED SQUARE FOOTAGE OF EACH LEVEL IS CALCULATED TO THE EXTERIOR FINISHED SURFACE OF THE OUTSIDE WALL OR FROM THE CENTERLINES BETWEEN HOUSES. (ANSI Z765-2013)
4. THIS FLOOR PLAN MAY ONLY BE REPRODUCED WITH PERMISSION OF THE REALTOR(S) ON THIS FLOOR PLAN.
* ANY MEASUREMENTS WITH AN ASTERISK (*) OR (APPROX) ARE APPROXIMATE AND FOR ILLUSTRATION PURPOSES ONLY AND ARE NOT E&O INSURED.

NORTH



SCALE: 0 2 5 10 FT.