



CHARLENE, SHANNON, JAMIE & ROSALEE

RE/MAX Select Properties
 Cell: 604-785-4324
 Office: 604-737-8865
 info@yourhomevancouver.ca
 www.yourhomevancouver.ca

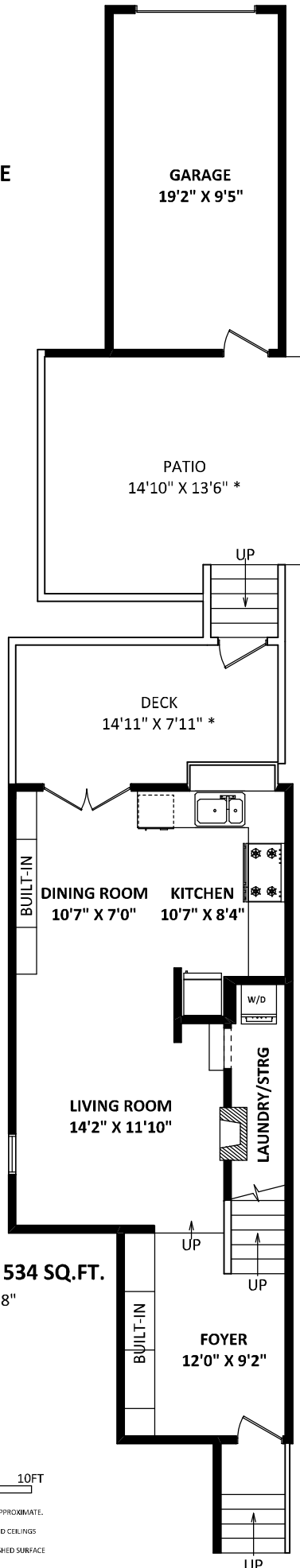
**1172 East Pender Street
 Vancouver, BC**

TOTAL FINISHED AREA: 1037 SQ.FT.**

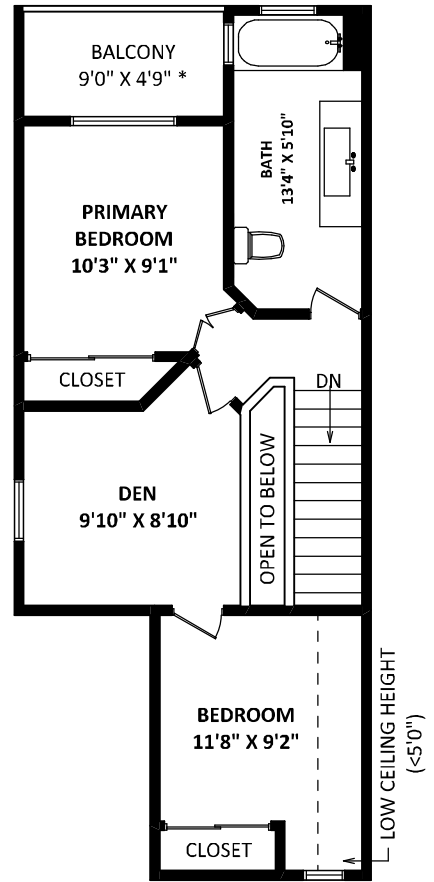
OTHER AREA(S)

GARAGE:	205 SQ.FT.
DECK:	125 SQ.FT.*
PATIO:	203 SQ.FT.*
BALCONY:	48 SQ.FT.*
CRAWLSPACE:	534 SQ.FT.*

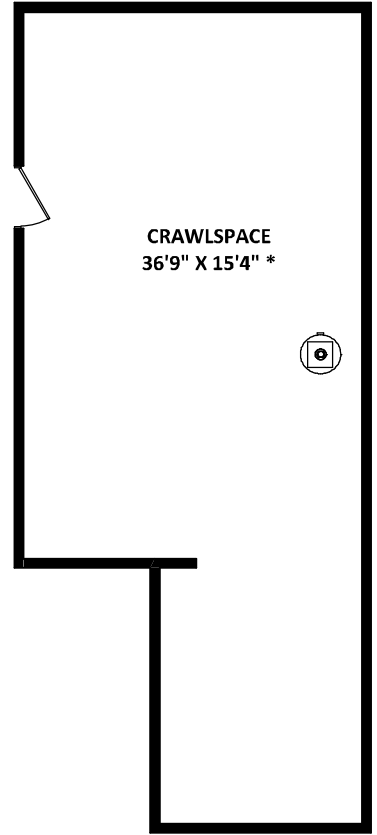
****INCLUDES 29 SQ.FT. OF LOW CEILING AREA(S),
 BOUND BY DOTTED LINES.**



MAIN FLOOR: 534 SQ.FT.
 CEILING HEIGHT: 8'8"



UPPER FLOOR: 503 SQ.FT.**
 SLOPED CEILING
****INCLUDES 29 SQ.FT. OF LOW CEILING AREA(S),
 BOUND BY DOTTED LINES.**



[APRIL 11, 2023]

 TEL: 604-575-1244
 www.seevirtual360.com



DISCLAIMERS:
 1. MEASUREMENTS ARE FOR PROMOTIONAL USE ONLY & ARE NOT INTENDED FOR CONSTRUCTION USE. ROOM DIMENSIONS ARE APPROXIMATE. MEASUREMENTS & CALCULATIONS FOR FINISHED AREAS ARE E&O INSURED.
 2. FINISHED AREAS ARE ENCLOSED AREAS IN A HOUSE THAT ARE SUITABLE FOR YEAR-ROUND USE, EMBODYING WALLS, FLOORS, AND CEILINGS THAT ARE SIMILAR TO THE REST OF THE HOUSE. (ANSI Z765-2013)
 3. FOR ATTACHED SINGLE-FAMILY HOUSES, THE FINISHED SQUARE FOOTAGE OF EACH LEVEL IS CALCULATED TO THE EXTERIOR FINISHED SURFACE OF THE OUTSIDE WALL OR FROM THE CENTERLINES BETWEEN HOUSES. (ANSI Z765-2013)
 4. THIS FLOOR PLAN MAY ONLY BE REPRODUCED WITH PERMISSION OF THE REALTOR(S) ON THIS FLOOR PLAN.
 * ANY MEASUREMENTS WITH AN ASTERISK (*) ARE APPROXIMATE AND FOR ILLUSTRATION PURPOSES ONLY AND ARE NOT E&O INSURED.